

Curtain Wall Systems

GUTMANN F50+ Passiv | F60+ Passiv



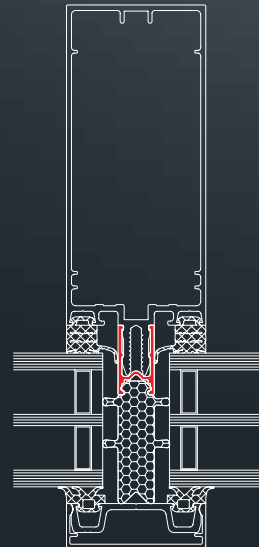
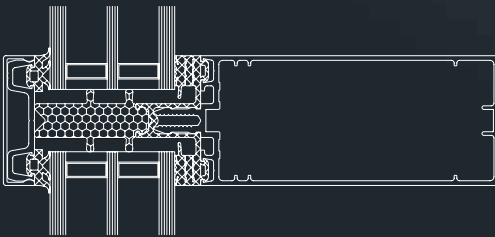
GUTMANN F50+ Passiv | F60+ Passiv

System Description

Passive house curtain wall system with 50 or 60 mm face width

- Passive house viability in accordance with IFT directive WA-15/1, in combination with the required service ability
- Identical profiles for mullion and transom, straight cutting, no transom profile notching: minimal off-cuts, rational manufacture and installation
- Patented joint connector technology for gap-free connection between transom and mullion
- Identical widths of inner glass gaskets at mullions and transoms
- Low edge radius for visually flawless transom connection
- Maximum glass loads up to 600 kg, depending on wind loads

System Cross Section



System Properties of Classes



Water tightness

RE 1500



Wind load

**2.0 kN/m²
3.0 kN/m²**



Air permeability

AE



Operating forces

E 5/I 5

PB 108 36688; Element size: 3498 x 3099 mm

Thermal Insulation



¹ Psi value of glass edge seal: Thermix TX.N; U_p value: 0.25 W/m²K; U_g value: 0.7 W/m²K; Element size: 1200 x 3500 mm